



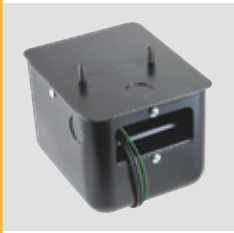
1092-H



Burner Manufacturer: Cleaver Brooks,
Industrial Combustion
HV Terminal: Rajah Connector
Junction Box: Internal
Replaces: Webster: 612-8A021



1092-PF-G



Burner Manufacturer: Power Flame
HV Terminal: Thumb Screw
Junction Box: Internal
Description: 1/4-20 x 1" Mounting Studs,
primary with three wires, one ground wire
Replaces: Webster: 612-6A056



1092-S



Burner Manufacturer: Gordon Piatt
HV Terminal: Thumb Screw
Junction Box: Internal
Replaces: Webster: 612-6A020/612-6A072



1092-F



HV Terminal: Thumb Screw
Description: Conduit Connection
Replaces: Webster: 612-6A7,
France: 6EEGW-2



1092-K



Burner Manufacturer: Dunham-Bush, Iron Fireman
HV Terminal: Rajah Connector
Junction Box: Internal
Description: 1/4-20x1" Mounting Studs
Replaces: Webster: 612-8AB017



1092-IC



Burner Manufacturer: Cleaver Brooks,
Industrial Combustion
HV Terminal: Rajah Connector
Junction Box: Internal
Description: 1/4-20 x 1" Mounting Studs



1092-N



Burner Manufacturer: Ray Burner
HV Terminal: Thumb Screw
Description: Conduit Connection
Replaces: Webster: 613-6A10,
France: 3RAFYR-14



1092-NA



Burner Manufacturer: North American
HV Terminal: Rajah Connector
Junction Box: Internal
Replaces: Webster: 612-8A02



1092-SG



Burner Manufacturer: Webster
HV Terminal: Thumb Screw
Junction Box: Internal
Description: Primary with three wires,
one ground wire

Model	Electrical Specifications
1092	120 Volt, 50/60 Hz, 6000 Volt Secondary, 25/20mA, One End Ground
1112	240 Volt, 60 Hz, 6000 Volt Secondary, 20mA, One End Ground
1196	240 Volt, 50 Hz, 6000 Volt Secondary, 20mA, One End Ground



Burner Manufacturer	Allanson	Dongan	France	Webster	Sid Harvey	Thermolok
10,000 Volt Secondary Mid Point Ground 120 Volt - Less Mounting Plate Replacement Type						
UNIVERSAL 6 WAY	421-BT636	LJH-90	LAUV	312-25AX0600	T1-15	T-628
UNIVERSAL 5 WAY	421-BT384			312-25AX0500		
	421-BT066					
	421-BT104	A10-SR10	LGCV	312-24AB0237	T-31N	
	421-BT276	A10-SW10	LGEV	312-25AB0237	T-17FM	C-551
	421-BT290	A10-SQ10	LGDV	312-24AB0202	T-17N	C-554
	421-BT299	A10-SJ10	LFBV	312-25A0202	T-21M	
	421-BT332	A10-SV10	LGFV	312-25AB0202	T-17M	C-555
	421-BT387	A10-SF10	LFAV	312-24A0202	T-21N	
INDUSTRIAL GAS TYPE IGNITION TRANSFORMERS - 6,000 Volt Secondary One End Ground, 120 Volt, 50/60 Hz						
CLEAVER BROOKS	1092-H	A060SJ5		612-8A021		
GORDON PIATT	1092-S	GPA-06		612-6A020/ 612-6A072		
IRON FIREMAN, DUNHAM-BUSH	1092-K			612-8AB017		
BX CONNECTOR	1092-F	A06-SA6	6EEGW-2	612-6A7	T-246N	
NORTH AMERICAN	1092-NA			612-8A02		
POWER FLAME	1092-PF	PFA-06		612-6A056		
RAY BURNER	1092-N	A06-SD7	3RAFYR-14	613-6A10	T-193N	
WEBSTER (PRIMARY HAS 3 WIRES)	1092-SG					
INDUSTRIAL GAS/OIL TYPE IGNITION TRANSFORMERS 10,000 Volt Secondary One End Ground 120 Volt						
OIL APPLICATION	542-A	A10-LA22		312-6A0456		
CLEAVER BROOKS	542-H	A10-LN2X				
GORDON PIATT	542-GP			312-9A0456		
POWER FLAME	542-PF					

Burner Manufacturer	Allanson	Dongan	Beckett	France	Carlin	Sid Harvey
OMNI® IGNITOR	2275U		< NO UNIVERSAL AVAILABLE >			T96I
AERO	2275-456		51828U	10SAY-56	41000-SO-AR	T87E
BECKETT A, AF, AFG	2275-628G	SSI-BK103	51771U	10SAY-04	41000-SO-BK1	T92E (1)
BECKETT AFII	2275-658		51805U	10SAYL-70		T97E
BECKETT S	2275-605		51824U	10SAY-05	41000-SO-BK2	T90E
CARLIN 17.5, 200, 201, 500, 501, CRD	2275-629		51840U	10SAY-16	41000-SO-SC	T95E
CARLIN 99, 100, 101, CRD	2275-630	SSI-CR205	51826U	10SAY-15	41000-SO-CAS	T94E
CARLIN 601 & UP	2275-633		51880U		41000-SO-LC	
WAYNE HI SPEED M/MH	2275-619	SSI-WN202	51825U	10SAY-03	41000-SO-WA3	T93E
WAYNE E	2275-620	SSI-WN208	51827U	10SAY-30	41000-SO-WA2	T88E
WAYNE HS	2275-647		51836U	10SAY-31	41000-SO-WA1	T89-10E
WEIL MCLAIN	2275-653		51837U	10SAY-32	41000-SO-WM	T96E
IGNITOR KIT	2275-KIT1		51835	10SAY-KIT	41000-SO-KIT	T97K